

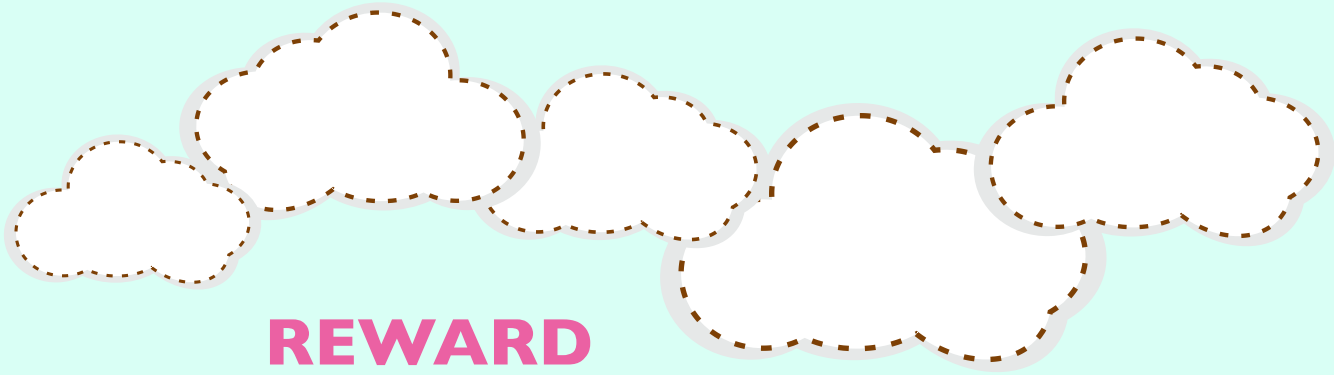
MOVE THE PRINCESS CHORE CHART

This chore chart works great for kids who have not learned to read, or do well with structure. Once your child has completed a chore/task they can move their princess. The more your child is able to physically move their princess, the more invested they will be in doing their chores.

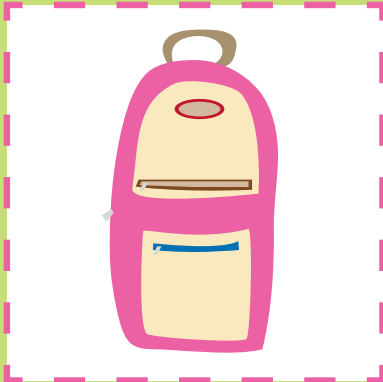
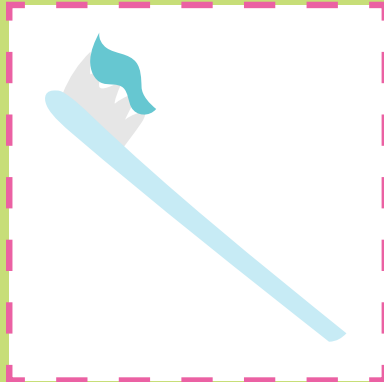
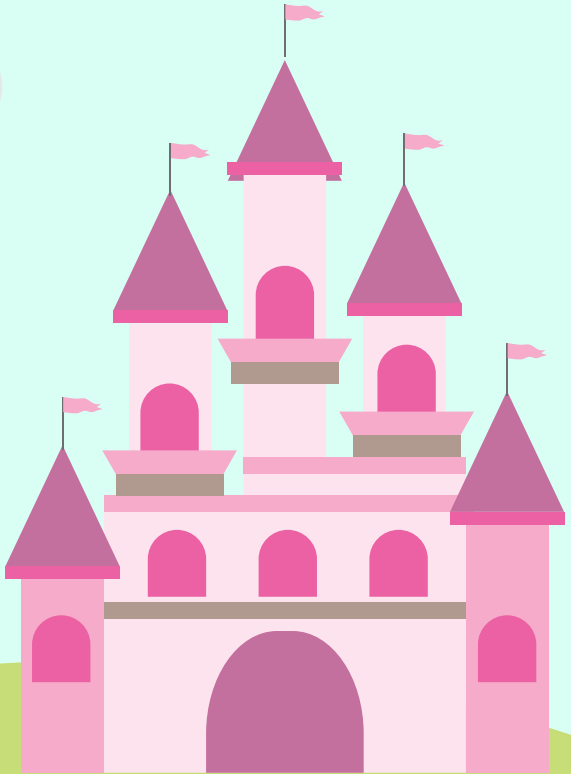
Included is both a morning and evening chart.

INSTRUCTIONS

- Print and cut out the princess.
- Laminate the pieces for durability.
- Attach Velcro to each piece.



REWARD



REWARD

